

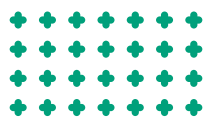


ENGLISH

*Reduce the appearance of fine lines & wrinkles
with advanced dermal technology*

Synergistic effects of copper peptide-1 and adenosine can help improve skin cells and wrinkles; Centella asiatica can shorten skin healing period, make skin barriers stronger and create new skin and niacinamide brightens the skin. Natural moisture fills the gaps in the skin's oil, giving it strong moisturizing properties for a long time.

DERMACELEB
B I O S K I N C L I N I C



LEAVE-IN CONDITIONING REPAIR CREAM: **REZOVEN CREAM**

A repair cream with prescription that minimized harmful materials to avoid stimulation on the skin that it improves sensitive skin and instantly soothes irritated skin.

+ Improves troubled area,
antioxidative and anti-inflammatory activity

+ Anti-aging effect
(improves skin elasticity and wrinkles)

+ Tone-up care that
brightens skin from inside

+ Reconstructs skin barrier
and improves tightness on the skin

+ Improves redness on the skin and restoration ability after the cosmetic procedure



REZOVEN CREAM FOR SKIN REGENERATION

RECOMMEND FOR...

01 Those who are worried about rough skin texture

Hyaluronic acid contained in Rezoven Cream is effective for supplementing moisture on the skin by combining with collagen in skin and improving moisture retention capacity. Also, ingredients extracted from nature provide moisture filled with nutrition on the skin to keep skin vitalized.

02 Those who are suffering from sensitive/troubled skin

It is easy to leave scars as wound or coloring on sensitive skin because certain area becomes dry, flaky, and itchy easily. Copper Tripeptide-1 is an ingredient with very low stimulation to the skin that it restores healthy skin by restoring damaged cells and promoting collagenesis.

03 Those who are worried about skin aging and dull skin tone

Rezoven Cream is a wrinkle+whitening difunctional cosmetic for improving skin tone and wrinkles through synergic effect of adenosine and copper tripeptide-1. Also, copper tripeptide-1 boosts SOD (superoxide dismutase), an antioxidant enzyme, to remove active oxygen that causes skin aging and niacinamide keeps skin bright and clear.

04 Those who need to soothe and relieve skin after cosmetic procedures

Treatment for soothing and moisturizing skin is needed right after cosmetic procedures as laser, stamp, and MTS. Rezoven Cream keeps skin comfortable after the treatment as panthenol and centella asiatica extract soothe and recover damaged areas and bromelain that removes swelling reduces infection on the skin.



COPPER TRIPEPTIDE-1

Restores skin cells

PANTHENOL

Improves anti-inflammatory and troubled skin

SODIUM HYALURONATE

Forms moisture protective film / Soothes skin

ADENOSINE

Improves wrinkles

CENTELLA ASIATICA EXTRACT

Skin immunity / Relieves irritated skin

BROMELAIN

Reduces bruise and swelling

NIACINAMIDE

Lightens skin

REZOVEN CREAM ENHANCE COPPER TRIPEPTIDE-1

Reduce the appearance of fine lines & wrinkles
with advanced dermal technology

DERMACELEB
REZOVEN CREAM
:COMPONENT

*Reduce the appearance of fine lines & wrinkles
with advanced dermal technology*

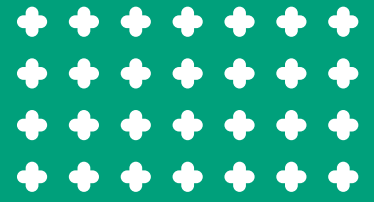
Synergistic effects of copper peptide-1 and adenosine can help improve skin cells and wrinkles; Centella asiatica can shorten skin healing period, make skin barriers stronger and create new skin and niacinamide brightens the skin. Natural moisture fills the gaps in the skin's oil, giving it strong moisturizing properties for a long time.

DERMACELEB
BIO SKIN CLINIC

Reduce the appearance of fine lines & wrinkles
with advanced dermal technology

REZOVEN CREAM

ENHANCE COPPER TRIPEPTIDE-1



1st EFFECT OF COPPER TRIPEPTIDE-1

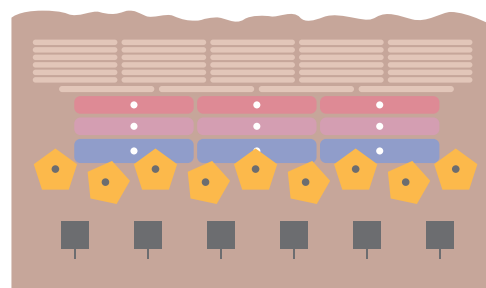
RECOVERS DAMAGED SKIN

Copper Tripeptide-1, a natural peptide found in blood and saliva of people, reduces scars and creates stem cells to reproduce skin by removing damaged collagen and elastin when tissues that make up the skin got damaged and acting as a signal that restores damaged tissues into normal tissues.

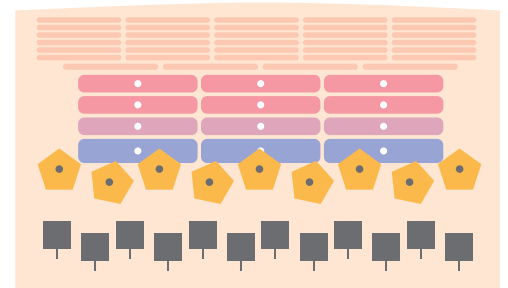
Restoration speed for skin damage becomes slower because plasma contains high levels of Copper Tripeptide-1 when people are young but decreases age.

Copper Tripeptide-1 in human body has antioxidative effect, removes damaged cells, vitalizes vascular function, forms moisture and protein, promotes synthesis of collagen and elastin, has anti-inflammatory effect because it improves function of immune cells, and improves wound healing power.

+ COPPER TRIPEPTIDE-1



<AGED EPIDERMIS>



<INCREASED SKIN RENEWAL & REPAIR>

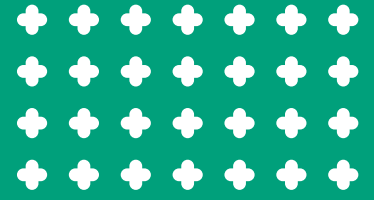
Stratum Comeum Differentiating Cells Transient Cells Integrins connect stem cells

COPPER TRIPEPTIDE EFFECTS ON AGED SKIN

REZOVEN CREAM

REZOVEN CREAM

ENHANCE COPPER TRIPEPTIDE-1



2nd EFFECT OF COPPER TRIPEPTIDE-1

PREVENTS AGING AND WRINKLES

Copper Tripeptide-1 is effective for preventing aging and wrinkles and has firming effect and the degree of promoting collagenesis is known to be greater than Vitamin C or retinol.

Copper Tripeptide-1 removes active oxygen that causes aging of the skin by activating SOD.



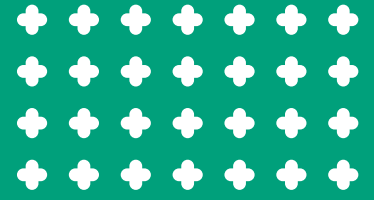
REZOVEN CREAM

Reduce the appearance of fine lines & wrinkles
with advanced dermal technology



REZOVEN CREAM

ENHANCE COPPER TRIPEPTIDE-1



EFFECTS OF CENTELLA ASIATICA

REPRODUCES SKIN AND CONTROLS SEBUM

An ingredient extracted from outpost of centella asiatica and it is an herb extract used for various purposes as folk remedy, treatment, health, and beauty by Sri Lanka natives in the past. Centella asiatica is known as tiger herb resulted from tigers rubbing centella Asiatic to heal wounds.

Madecasic acid contained in leaf and stem of Centella Asiatic reproduces skin by reducing inflammation. Also, it reduces pigmentation through the regenerative effect.

Soothes irritates skin and controls sebum by balancing oil and moisture. So, it is helpful for solving dry skin and improving troubled skin.

+ CENTELLA ASIATICA

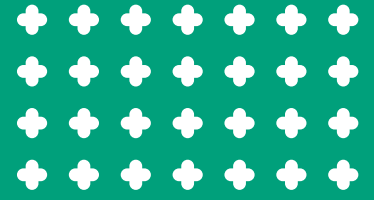


REZOVEN CREAM

Reduce the appearance of fine lines & wrinkles
with advanced dermal technology

REZOVEN CREAM

ENHANCE COPPER TRIPEPTIDE-1



EFFECTS OF PANTHENOL, BROMELAIN

PROMOTING SKIN REPRODUCTION

Effects of Panthenol

Panthenol, a provitamin B5 component called 'pantonic acid,' restores skin by improving moisture maintenance function of the skin and promoting skin reproduction by changing into Vitamin B5 when it comes into the skin.

Vitamin B5 is known to have anti-inflammatory, moisturizing, and wound healing effect, protect skin, and soothe sunburn.

Panthenol, an anti-inflammatory and anti-stimulation material, has very low stimulation, high safety for the skin, helps epithelial cell to form, and heals wounds that it soothes troubled skin by regenerating the skin, strengthening skin barrier, and keeping dry skin soft and elastic.

HELPS TO REDUCE SWELLING QUICKLY

Effects of Bromelain

Bromelain, a proteolytic enzyme in pineapple, is widely distributed in hard stems. Edema and bruise that get created when skin irritation occurs are all formed with protein, and Bromelain relieves symptoms by inflammation by breaking down protein.

Also, it keeps skin soft and helps to reduce swelling quickly by stopping fibrosis of tissue fluid that becomes the cause of swelling.

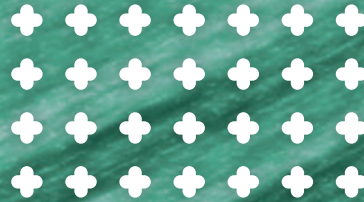
Reduce the appearance of fine lines & wrinkles
with advanced dermal technology



REZOVEN CREAM

REZOVEN CREAM

ENHANCE COPPER TRIPEPTIDE-1



EFFECTS OF REZOVEN CREAM

First,

It soothes sensitive skin and provides nutritional moisture on the skin.

Rezoven Cream contains panthenol and centella asiatica extract, anti-irritation and anti-inflammatory ingredients, that it helps epithelial cells to form and soothes skin.

You can feel moisturizing care filled with nutrition as other ingredients extracted from nature protect skin without getting dried.

Secondly,

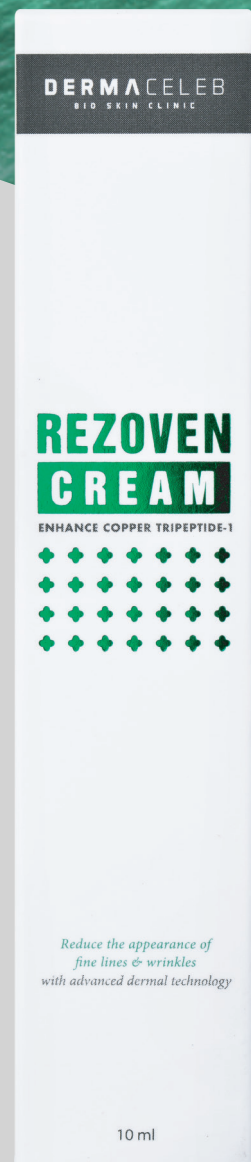
It restores young and healthy skin.

Copper Tripeptide-1 of Rezoven Cream has higher promoting effect of collagenesis than Vitamin A and Vitamin C and it helps to restore damaged skin into healthy skin. Also, it maintains natural beauty of the skin by improving functions of immunocyte.

Thirty,

It is the optimal skin care product after laser, plastic surgery, stamp, and MTS procedure.

Use of hypoallergenic cosmetics is essential for skin after the cosmetic procedure because it is very sensitive to stimulation. Rezoven Cream improves skin condition with safe prescription that only used safe ingredients for the skin as centella asiatica extract, panthenol, and bromelain.



REZOVEN CREAM

REZOVEN CREAM

ENHANCE COPPER TRIPEPTIDE-1



HOW TO USE REZOVEN CREAM



01

Daily moisturizing care

After using Derma Celeb Booster, apply softly on your whole face and neck and tap lightly for better absorption.

02

Treats skin trouble that appears repeatedly.

Reapply frequently on blemishes and troubled areas.

03

Use on certain area after treatment

Massage and apply softly on areas that need treatment after laser, plastic surgery, stamp, and MTS procedure.

DERMACELEB
BIO SKIN CLINIC

www.dermaceleb.com